

# AIRE VALLEY MAG

COMMUNITY NEWS AND LOCAL BUSINESS DIRECTORY

April 2022



DISTRIBUTED **FREE** TO HOUSEHOLDS AND BUSINESSES  
IN FELL LANE, EXLEY HEAD, LAYCOCK, KEIGHLEY, UTLEY, LONG LEE,  
RIDDLESDEN, & EAST MORTON

[www.airevalleymag.co.uk](http://www.airevalleymag.co.uk)



# truhar accountancy

A local firm designed to fit your needs. Qualified staff, friendly faces, clear pricing and a helping hand whilst you concentrate on managing your business or investment.

- Annual accounts and corporation tax
- Self assessment tax returns
- CIS contractor and subcontractor returns
- Payroll
- Making tax digital for VAT
- Making tax digital for self assessment
- Business finance
- Back office facilities

Call us on 01535 957979 or visit us at 7 Main Street, Cross Hills, BD20 8TA for a no obligation chat and quote.

Visit our website [www.truhar.co.uk](http://www.truhar.co.uk) for more information including prices, directions & parking.



**Keybury**  
Fire and Security

40 YEARS  
1982 - 2022

*Book your free home security survey*

- Burglar alarms
- CCTV
- Access control
- App control
- Monitored Systems
- Doorbell Cameras

01535 661197  
[keybury.co.uk](http://keybury.co.uk)  
[sales@keybury.co.uk](mailto:sales@keybury.co.uk)

pet friendly home security systems

Worth Enterprise Park, Valley Road, Keighley

April is here and it feels like we have ‘turned the corner’ as British Summertime ushers in brighter days. I also understand that it is perfectly possible to get caught out with a whiplash of wintry weather at this time of year. But at least the daffodils and crocuses have burst through to bring us hope and courage. Trains and Transportaion are recurring themes in this month’s magazine. You’ll find a ‘heads up’ on the Keighley ‘In Motion’ Transport Festival that is scheduled in June. Learn more about it on pp16 &17 and be sure to save the dates. (June 2nd & 3rd). April 9th~24th, the Keighley and Worth Valley Railway run their Easter Express trains. More fun in motion! We also celebrate the work of volunteers in the community with a spotlight on the work of the Aire River Trust and Action Point in Keighley, amongst others. Have a great month. Liz



Liz Barker, Editor

# Worth Valley Fencing

## Fencing manufacturers & suppliers

- Palin Panels
- Overlap Panels
- Feather Edge
- Decking
- Bespoke Panels
- Met Posts

Full fitting service available

**Tel: 01535 665040**

**email: [newfabs@btconnect.com](mailto:newfabs@btconnect.com)**

**Unit 3, Crown Works, Worth Way, Keighley BD21 5LR**

**Bingley Windows & Glass Co. Ltd.**

Always great value, always great service!

..... Winter warmer event now on .....

Specialising in 'A' rated energy windows, doors, bi-folds & conservatories; all modern colours available and now introducing the flush sash range and box sash windows

Recommended installers for Solidor composite doors

Fully equipped in house glass shop with a quick turn around for double glazed units

All installations backed by Certass & accredited by TRUSTMARK scheme

**Accurate free quotes generated promptly**

(01535) 958 183  
07966 906 782  
[admin@bingleywindowsandglass.co.uk](mailto:admin@bingleywindowsandglass.co.uk)  
[bingleywindowsandglass.co.uk](http://bingleywindowsandglass.co.uk)

Unit 3E, Aireworth Mills  
Aireworth Road, Keighley, BD21 4DH  
(off Marley Roundabout)

Working alongside Cobbydals Construction Limited



# Ashmount HOUSE

## Meet our Chefs



TASHIEN COLLINSON  
*Head Chef*

### About Me:

- Trained by Royal Family owned Chester Grosvenour
- Former Chef Director at 7 McFarlane Inn
- Chef Partner at Michelin's award restaurant
- Ashmount is dining & events open 7 days



LINDSEY STEVENS  
*Head Chef*

### About Me:

- Qualified chef since the age of 16
- 17 years working & teaching students in catering college
- Worked within the Royal Household at Royal Ascot
- Queen of Ashmount Teas at Ashmount

## Our Shortbread Recipe

PREP: 10 minutes COOK: 15 minutes

### INGREDIENTS

- 600g plain flour
- 400g butter
- 200g caster sugar

### DIRECTIONS

- Mix sugar in with flour then rub in half of the butter setting aside the other half.
- When mixture resembles breadcrumbs melt the remaining butter & mix into the breadcrumbs & squeeze together until it forms a dough.
- Roll out to a thickness of a pound coin & cut with desired cookie cutter.
- Bake at 190c / Gas Mark 5 For 15 minutes, remove from oven & sprinkle with caster sugar while still hot.
- Lemon or orange zest, chocolate chips, sultanas, or dried cranberries can be added at the breadcrumb stage for extra flavour.

Ashmount House, Mytholmes Lane,  
Haworth, BD22 8EZ  
Telephone: 01535 645726  
Email: [info@ashmounthaworth.co.uk](mailto:info@ashmounthaworth.co.uk)



To advertise call Karen or Liz on 01535 642227



# ME Ashmount NU

Ashmount House, Mytholmes Lane, Haworth, BD22 8EZ

Call To Book 01535 645726

## Ashmount Afternoon Tea

### SELECTION OF FINGER SANDWICHES

- Bronte cheese & chutney, wholegrain bread
- Yorkshire egg & shallot mayonnaise, white bread
- Yorkshire ham, wholegrain mustard, rocket, white bread
- Smoked salmon, caper chive cream cheese, wholegrain bread

### MEAT OR VEGETARIAN SAVOURIES

- Pork, sage & onion rolls
- Vegetable quiche (v)

### SWEET SELECTION

- Coffee and walnut cupcake, coffee buttercream frosting & walnut topping
- Orange shortbread biscuits
- Seasonal berry & white chocolate posset
- Fruit scones, preserves, clotted cream
- Chocolate tart

### ASHMOUNT TEA SELECTION

- Choose from a wide variety of traditional & fruit teas
- Cafetiere of ground coffee

Full Wine & Drinks list also available

### ALL DIETARY REQUIREMENTS CATERED FOR

Afternoon tea £19.50 per person

Afternoon tea with a glass of Prosecco £25.00 per person

Afternoon tea with 90 minutes bottomless Prosecco £40.00 per person



WORTH VALLEY

## KEIGHLEY & WORTH VALLEY RAILWAY

I know that I've talked before on these pages about the challenges of running a 150+ year old railway because we have an elderly infrastructure that needs regular maintenance and renewal, and a fleet of vintage steam and diesel locomotives that haul equally historic carriages. With steam locomotives in the operational fleet that are over 100 years old, the scale of our challenge is I hope clear.

The interruptions to our engineering and maintenance plans caused by the lockdowns and restrictions over the last couple of years have not helped, but our volunteers have been working very hard to clear the backlog, and we have just completed another week where we focus on civil maintenance projects to take us a step closer to being back on track, which is testimony to their effort and commitment.

Raising funds to help pay for the maintenance is always difficult, so it was especially welcome when over 3,000 people visited us during our recent Steam Gala, and we were also very busy during the Haworth Witches and Wizards event. It makes all the hard work worthwhile when you see passengers enjoying their journey back in time with us, and was especially

rewarding to welcome so many steam enthusiasts sharing our passion for steam during the Gala weekend. Of course, we cannot afford to stand still, and we are already planning our next round of engineering projects, including the prospect of what is looking like being a £0.75 million or more cost to replace the double-span bridge that crosses Bridgehouse Beck just outside Haworth Station, and which connects the locomotive yard to the mainline.

As well as the behind-the-scenes work, we are continuing to train new volunteers to work on the operational side of the Railway, and I've very pleased to report that we have "passed out" our first female locomotive driver, Fran, who joins her father, father-in-law and husband as a member of our driver team.

With so much to do, I hope that you will consider joining our volunteer team to help us keep those increasingly elderly wheels turning. Please do get in touch with the Railway via the links on the website or call in at a station if you are able to offer even a little time to us. In the meantime, I look forward to welcoming you aboard as a passenger!

~ **Matt Stroh**

Keighley & Worth Valley Railway Chair

**EASTER EXPRESS**

**TRAINS EVERYDAY**  
9<sup>th</sup> - 24<sup>th</sup> APRIL

BOOK ONLINE 3 DAYS IN ADVANCE AND SAVE 15%

01535 645214 WORTH VALLEY WWW.KWVR.CO.UK

ALL DAY ROVER  
LOCAL FISH & CHIPS  
TWO ROUND TRIPS  
LIVE MUSIC

**DON'T MISS THE HAWORTH HADDOCK!**



~ Helen O'Connell

In this month's Treacle page I want to shine a huge spot light on all the amazing volunteers in our community. Chances are you have come across them and maybe not stopped to appreciate what a profound difference they make in our villages and towns.

From food banks and scout groups, to parks, churches and schools. These people walk among us. Each doing their own little bit to make this world a better place.

At a time when the news is full of dread and disaster, maybe switching off and instead looking at ways you can help make a small difference in your own world, could be the answer to reducing anxiety and feeling better. Instead of focusing on the things out of your control maybe looking at what you can do to help the world around you could be the answer.

Almost all the organisations listed on Treacle.me are reliant on volunteers in some way. Many of them would be delighted of an offer of help. If you would like to make a start but are not sure how, then **Action Point in Keighley** is a great place to look. They have charities who need help with jobs such as driving, selling on eBay, being a "gig buddy", using creative skills or helping out in museums. There are so many opportunities for you to give something to your community. **The best kept secret is this, you will often get far more out of these roles than you put in.**

**SHOUT OUT TO ALL COMMUNITY VOLUNTEERS**

Volunteering has been shown to help you gain a sense of purpose, become happier, boost your self-esteem, improve job prospects and even increase your brain functioning. Let's be honest, who doesn't want that?

**Action Point** and many of the other local organisations looking for volunteers can be found in the Find Friends section of **treacle.me**.



Open your smartphone camera. Move your camera so the QR code below is in the frame. The QR code's URL (Uniform Resource Locator, or web address) will appear. Click through the URL to download the Treacle APP



Android



Apple



**IT'S WORTH TALKING ABOUT**  
[www.itsworhtalkingabout.org](http://www.itsworhtalkingabout.org)  
 LOCAL MENTAL HEALTH SUPPORT

Find us on social media  
**#ItsWorthTalkingAbout** f t i in

**LOCAL PEER SUPPORT GROUPS FOR MEN & WOMEN**

To join our FREE talking therapy sessions visit  
[www.itsworhtalkingabout.org](http://www.itsworhtalkingabout.org)  
 for times & locations.

We have MHFA & Peer Support trained facilitators at each group with safeguarding & signposting policies in place to help ensure that the best support is provided to everybody.

**Digi-Man Aerials**  
 Digital Aerials & Satellites

Fully Qualified Installer of  
**Freeview** freesat

**OAP DISCOUNT**  
**ALL WORK GUARANTEED**  
**LOCAL MAN**

ALL satellite & aerial problems solved!

For a FREE Quote & Advice Call Digi-Man Aerials

**Mention this magazine & Get 10% Off**  
 Friendly Professional service

Freephone: 0800 0377011  
**call now 01535 646141**

## Upstairs at Pennybank



Two rooms with a view. Beautiful space to hire.

- ◆ Meetings ◆ Pop-ups
- ◆ Corporate events
- ◆ Master classes ◆ Private parties
- ◆ Gallery space ◆ Co-working

Located in the heart of Haworth village.

**07742 983 608**

**upstairsatpennybank@gmail.com**

2-4 West Lane, Haworth BD22 8EF

**Robbie Moore MP**

**Keighley, Ilkley and the surrounding areas**

For help or advice please contact:  
 Office of Robbie Moore MP  
 Shan House, 80-86 North Street  
 Keighley, BD21 3AG  
 01535 600538  
[robbie.moore.mp@parliament.uk](mailto:robbie.moore.mp@parliament.uk)  
Surgeries by appointment only

# Local groups come together to care for the River Aire

Volunteer groups from Leeds to Skipton are gathering to give the River Aire a giant Spring clean from top to bottom during a weekend in April.

Groups including angling clubs, community groups and the environmental campaign groups are joining together with the support of local charity the **Aire Rivers Trust** to deliver a series of clean ups. These will all take place between **Thursday 7th and Sunday 10th April**.

"The River Aire is a fantastic example of a river that is getting better and better. It is leaving behind its history of use and abuse by industry. Along the length of the river we see good quality coarse and fly fishing, beautiful wildlife and fantastic walks. We're even seeing Atlantic salmon returning to the river after they were lost 150 years ago. We know that winter will have seen a lot of litter and debris washed into the River Aire from floods and its surroundings. Here, they can increase the risk of floods, whilst making local beauty spots unsightly for visitors. We want to work together to remove them before they get washed downstream or harm wildlife," said Simon Watts, Community Engagement Manager for the Aire Rivers Trust.

Groups planning events near the source of the River Aire include Bradford City Angling Association, Wild About Lothersdale and Cleaner Greener Cononley. Around Keighley they'll be joined by River Worth Friends, Keighley Angling Club and Riddlesden Toad Patrol. In Bingley, Friends of Myrtle Park plan to clean the banks of the River Aire as it flows through their park.



Each group will make a huge difference to the local stretch and the whole river.

**Riddlesden Toad Patrol** will be cleaning the River Aire from Stockbridge to Riddlesden Golf Club at **10am on Thursday 7th April**.

Sue Patchett from the group said "Us toad patrollers are nature lovers and often do our own litter picks within the community as we understand the harm carelessly discarded litter can do to wildlife. Recently I found a dead hare with a plastic bag over its head in a remote location and we were saddened to see photos of a juvenile seagull at Keighley Tarn with its beak stuck inside a plughole. We like to do our bit to reduce the threat to wildlife and we take pride in where we live and want to see our surroundings looking their best."

The event is a celebration of **#OurCleanRiver** as part of the Aire Rivers Trust and Environment Agency's Developing the Natural Aire project.

**Details of all events and how to join can be found on the Aire Rivers Trust's website at [www.aireriverstrust.org.uk](http://www.aireriverstrust.org.uk) and on social media using the hashtag #OurCleanRiver.**

## Developing the Natural Aire

A project by the Environment Agency and Aire Rivers Trust  
To find out more visit: <https://dnaire.org.uk/>



### Danny Hanson

painting and decorating

A professional and reliable decorating service

- Commercial
- Domestic
- Free estimates

Call Danny on: 07533 151610  
Email: [info@dhansondecorating.co.uk](mailto:info@dhansondecorating.co.uk)  
[www.dhansondecorating.co.uk](http://www.dhansondecorating.co.uk)






### Anchor Logs™

**LOVE YOUR FIRE**

KILN DRIED HARDWOOD LOGS | KINDLING  
LOG STORES | SMOKELESS COAL

Tel: 01756 748342

Email: [hello@anchorlogs.co.uk](mailto:hello@anchorlogs.co.uk)  
Web: [www.anchorlogs.co.uk](http://www.anchorlogs.co.uk) (order and pay online)







### NICHOLSON

Plumbing,  
Gas Central Heating  
& Repairs

Call Rye Bailey  
01535 523747 or  
07392 616 290




**A. R. CARLING** Est. 1996  
**Plumbing & Heating Services**  
Haworth

With over 20 years experience

**REPAIRS \* SERVICING \* INSTALLATIONS**  
Central heating specialist \* Gas appliances  
Unvented systems \* Power flushing Landlords  
gas safety certificates

All general plumbing & heating work

Tel: 01274 409789  
07900 941760






Est. Since 1940

STILL FAMILY OWNED & OPERATED.  
TRAVEL SAFELY IN COMFORT AND STYLE  
WITH OUR MODERN FLEET OF COACHES.



## 2022 Tours

Mystery Weekends, Spring Scottish,  
Aberavon, Suffolk, Germany – Moselle  
& Rhine Valleys,

Isle of Wight, Ireland, Scottish Autumn  
Tints, Thursford Christmas Spectacular

Local en-route pickups within 20 miles of Addingham

**TEL: (01943) 830206 / 830720**  
[www.steelscoaches.co.uk](http://www.steelscoaches.co.uk) [info@steelscoaches.co.uk](mailto:info@steelscoaches.co.uk)



### Bathroom & Fireplace Centre

Gas, LPG & electric fires • Fireplaces • Multi fuel stoves  
Central heating • Bathrooms supplied & installed  
Boilers • Radiators

Maintenance & servicing of all gas appliances

**01535 663313 07734 567222**  
[www.dsmlumbingandheating.co.uk](http://www.dsmlumbingandheating.co.uk)

**Your plumbing & heating specialist**






# Sudoku

1			9		7			
			3		6			
			7		4	9		
	1	2	8					
			5	6	2			
				4	8	3		
3	5			4				
		4			9			
	2		5					1

			5	8				6
		9	7	1			2	
		5			4			
				4		5	7	
				8				
9	3		5					
		2				1		
	1			7	5	8		
8			6	3				

1			9					4
	3			8				9
		2			4	6		
		3		9				7
	7		4		1		8	
8				5		4		
		5	2			3		
	6			1			4	
4					3			1

				3	4			1	2
	7	9	6					8	
		7				3			6
	5	1		9		8	7		
8		3				1			
	3				1	2	6		
6	4		5	8					

To solve a sudoku puzzle, each row of nine squares must contain the numbers 1 through 9. Each column must also contain the numbers 1 through 9, and each box must contain the numbers 1 through 9.

## Where in the Aire Valley? COMPETITION



Where is the red X located in the photo to the right?

This month's prize is donated by  
Keighley Picture House:  
Family ticket

Email your answer including your name & address to:

[mail@worthvalleymag.co.uk](mailto:mail@worthvalleymag.co.uk)

The winner will be selected from all correct answers received by 20th April 2022

Last month's location was Our Lady of Mount Carmel Catholic Church, Silsden and the winner was Daniel Bloomer from Keighley.

## See your ambitions spring to life at Keighley College

Visit our open event and get started with over 80 courses, supportive teachers and an impressive campus.

Open event 7 April, 4-7pm

To book, and to see future events, visit [keighleycollege.ac.uk/events](http://keighleycollege.ac.uk/events)

**IC** Keighley College

A member of Luminare Education Group.



CE APPROVED

**Now only  
£895\***  
for a fully fitted electric garage door.

WAS £1,354 INCLUDING VAT.

**Gotta get a Garolla.**

Trustpilot  
4.8 out of 5 | Over 2,000 reviews

**WHAT'S INCLUDED WITH EVERY DOOR:**

- FREE EXPERT MEASURING & FITTING
- 2 REMOTE CONTROLS
- ACOUSTIC & THERMAL INSULATION
- FREE DISPOSAL OF YOUR OLD DOOR
- AVAILABLE IN 21 COLOURS

Garolla garage doors are expertly made to measure in our own UK factories, they're strong and solidly built. The electric Garolla door rolls up vertically, taking up only 8 inches inside your garage, maximising valuable space.

Give us a call today and we'll come and measure up completely **FREE** of charge.

**GAROLLA**  
ROLLER SHUTTER DOORS

[www.garolla.co.uk](http://www.garolla.co.uk)

CALL US TODAY ON:  
**01535 810 075**

MOBILE:  
**07537 149 128**

LINES OPEN 7 DAYS A WEEK

\*Offer valid for openings up to 2.6m wide & including 2 remote controls, 55mm white slats, internal manual override.

To advertise call Karen or Liz on 01535 642227

**BOLTON ABBEY**

**COMING SOON**

EASTER TRAIL 9 - 24 April

FAMILY CYCLE ZONE 7 May - 25 September

WELLY WALK 28 May - 30 October

SUE RYDER'S SOLSTICE SAUNTER 21 June

ENQUIRIES: 01756 718009 | [info@boltonabbey.com](mailto:info@boltonabbey.com) | [boltonabbey.com](http://boltonabbey.com)

## Conservation in action at East Riddlesden Hall

See how our team care for the collection at East Riddlesden Hall, with special drop in conservation in action sessions. Visitors will soon be able to get closer to history at East Riddlesden Hall, with new weekly conservation sessions. It's a chance to find out about how the team at the historic manor house look after the special collections. Each week, visitors will be able to see a different conservation task in action, depending on the priorities of the house team. You might see them looking after the collection of clocks in the house, delicately cleaning some of the many ceramics, or cataloguing and recording items to check on their condition. The team also care for the paintings, furniture and textiles in the house.



When the hall was donated to the National Trust in 1934, it was completely empty. The collection currently on view to visitors of the house was created through a combination of purchases, loans and bequests, and now tells the story of those who once called this place home. Conservation in action sessions will be running most Tuesdays, depending on staff and volunteer availability. They will be drop in, and there is no need to book.

East Riddlesden Hall is open to visitors Saturday – Wednesday, 10:00 – 4:00.

**Conservation in action will take place on Tuesdays, 10:30am ~ Noon.**

To find out more, or to find out more about volunteering with the National Trust at East Riddlesden Hall, visit:

<https://www.nationaltrust.org.uk/east-riddlesden-hall>



# Keighley **IN MOTION** 2022

After three years of planning and two postponements due to Lockdowns, the KEIGHLEY IN MOTION Transport Festival will go ahead on Thursday 2nd and Friday 3rd June 2022, these being the two Bank Holidays of HM Queen's Platinum Anniversary Weekend.

"This is probably the biggest transport event we have ever staged in Keighley" said Festival Co-ordinator Graham Mitchell. "And it involves a range of voluntary and public sector organisations; two model railway clubs, Craven Old Wheels, the local history society, Keighley & Worth Valley Railway, Cliffe Castle Museum; Keighley Bus Museum Trust, Leeds & Liverpool Canal Society, the Museum of Rail Travel, Bahamas Locomotive Society, Renaissance Motorcycle Workshop, the Lion's Den (Men's Shed) and lots of independent car and bus and horse owners; all with the financial support of Keighley Town Council and Bradford Metropolitan District Council."

The Festival will be a gigantic free-to-the-public showcase of water, road and rail transport through the ages, including vintage and veteran cars, Dragon Boats and horse-drawn wagons in Cliffe Castle Park; Renaissance Motorcycles in the Airedale Centre; working short boat Kennet on the canal at Stockbridge Wharf (Granby Lane), K&WVR steam & diesel trains at Keighley Station and Rail Story Ingrow; working model railways and 'Ten Travel Tales of Keighley' in the Civic Centre; and a display of 'tracklesses' (trolleybuses) & motorbuses from 1913 to modern times outside Keighley College. There will also be Brass Bands, Street Theatre and Food Stalls at several sites.

No entry charge will be made at any of the Festival Sites and a free-to-users 15 mins-frequency free bus service will be provided by The Keighley Bus Company from 10.00 am to 5.00 pm each day to connect the six Festival locations around the Town.

"Apart from the heritage cars at Cliffe Castle Park, we would like this to be a car-free Festival" said Graham "So we are asking Car Owners NOT to drive to the Festival Sites, but to use the FREE PARKING at the Airedale Centre multi-story car park, or the Council car park on Scott Street, and then to board the free buses from Keighley Bus Station or from outside Wetherspoon's. This free bus service will also pick up and set down at any marked bus stop on the circular route."

2022 also marks 90 years since the motorbuses of Keighley-West Yorkshire Services replaced Keighley Corporation 'tracklesses' (trolleybuses). So amongst the vehicles representing the anniversary will be:-

- A replica of a 1913 Cedes Stoll single deck 'trackless' which used to run from Ingrow Bridge to Cross Roads.
- The 1924 Straker Clough double deck 'trackless' which used to run from Ingrow Bridge to Utley and Stockbridge.
- The restored 1927 Blythe & Berwick Leyland Lion motorbus used in the TV Series "All Creatures Great & Small".
- The only remaining 1932 Keighley-West Yorkshire Leyland Titan double deck motorbus.

These four vehicles, appearing together for the first time, will be on display on the Keighley College car park.



**CONTACT Graham Mitchell**  
rgm@dockroyd.co.uk Tel: 01535 645454



# IN MOTION

## Keighley Transport Festival 2022

### June 2nd & 3rd 10am-5pm



**FREE Circular Bus Service**  
linking Bus Station & Airedale Centre to  
~ Cliffe Castle Park ~  
~ Stockbridge Wharf (Granby Lane) ~  
~ College car park ~ Rail Story Ingrow ~ Civic Centre  
~ every 15 minutes 10am - 5pm

## FREE ENTRY TO ALL FESTIVAL SITES

**Classic cars, buses, steam trains and motorbikes.**

Street theatre, music, food and activities - a free family festival not to be missed!

[www.keighley-in-motion.co.uk](http://www.keighley-in-motion.co.uk)



## Marsh Top: Rural life on the farm



It has been a busy winter for us at Marsh Top Farm and as Spring has sprung it doesn't slow down.

On our farm we have a beautiful herd of Boer Goats and this year have had 8 kids, 6 boys and 2 girls. You may have been lucky enough to see one of favourite kids, Norman...not that we pick favourites! We still have one of our nanny goats left to kid, little Toffee who should be due any day now. In the summer months you will be able to see our beautiful herd in the field near our garden area.

As you may know during the winter months it is important we keep our cattle in our farm buildings, as the land gets very wet living on marsh land. It is coming up to the time of year where we will be turning out the cattle onto the Worth Valley, when the land is nice and dry.

You may also have seen on our Facebook we have had our first calf of 2022, he is a Heriford cross Highland and his name is Steve. We are expecting another 10 – 12 calves this year in the spring which you will be able to see out in the fields in summer.

As the lighter nights are coming, keep an eye out on our Facebook page for the change to our opening hours. We stay open an hour

later when it gets lighter, which means you have extra time to pick up your groceries for the week.

Our speciality at Marsh Top Farm is home reared free range pork and grass fed beef. (Our bonny pigs are featured on the cover this month). We pride ourselves on providing a great happy life for our livestock and part of that is our cattle getting to enjoy a grass enriched diet. There are so many benefits to this for us, rotating the cattle through different pastures through the Worth Valley means we are able to improve soil fertility as well as preserving the native ecosystem of the land. For us that eat grass fed beef their are also health benefits; grass fed beef contains as much as three times more Omega-3, rich in Vitamin A and E, which help strengthen the immune system and maintain healthy skin and eyes. Vitamin E is actually four times higher in grass fed meat than grain fed.

We are also happy to announce that we have started a new market, the Real Food Harrogate market. Run by volunteers, the market is held on Crescent Gardens on the third Sunday of every Month (unless specified) at 10am till 3pm. We hope to see you there.

**S.A.S LANDSCAPE & GARDENING SERVICES**



Fencing, Flagging, Decking, Turfing, Grass & Hedge Cutting, Weeding & General Tidy-ups.

**07766 564676**  
stevesmith31@tiscali.co.uk

**bronte CANINE DOG TRAINING**



Adult dog training  
Puppy training  
One to one sessions

**Call Paula 07590 045563**

info@brontecanineservices.co.uk  
www.brontecanineservices.co.uk

**WORTH VALLEY TREES**



**07775503195**  
worthvalleytrees@gmail.com  
All aspects of tree work undertaken

**HOME & GARDEN SERVICES**

**JE**

- Power Washing
- Grass & Hedge Cutting
- Garden Tidy
- Flagging & Walling
- Fencing & Decking
- Painting
- Tiling & Grouting,
- Small Plastering jobs

ALL WORK CONSIDERED  
PLEASE PHONE JOHN ON **07739 573836**

**Marsh Top Farm Shop**  
Family Farmers and Butchers

**Visit the Farm**  
Marsh Lane,  
Oxenhope, BD229RN  
Fri - Sat: 10:00 - 16:00  
Sun: 10:00 - 15:00

**Spring is on its way and we have a great selection of bulbs at the Farm.**

**We specialise in grass reared beef and home reared pork and goat.**  
Locally sourced lamb, mutton and game, traditionally dry cured bacon, handmade sausages, burgers, handmade pies, cooked meats, cheeses, fresh fruit and vegetables.

**Find us at the Farm and local markets:  
Hebden, Ilkley, Baildon & Harrogate**

Butchers - Farm Shop - Markets - Local Delivery  
07530 028869  
www.marshtopfarmshop.co.uk



# COMMUNITY PAGE

## The Shed meet at Cliffe Castle

every Tues, Weds & Thurs 10am - 4pm.

**Morton WI** meet every second Tuesday evening each month. Join us for a social evening with refreshments at the Institute in East Morton 7:20 pm.

**Every Weds** at Morton Institute

**Morton meet and tiny feet** 2.30-4.30pm

**Every Weds** 1pm - 3pm

**Knit & Knatter** at Keighley Library All Welcome.

**Every Friday Zumba** Morton Institute 12-1pm A fun way to start your weekend for just £5

**Every Monday & Thursday Morton Institute Art classes**

term time 10-12 & 1-3 pm Contact 01274560279

**Mondays 1 - 3pm Keighley Tea Dance** at the Civic Hall

**Every Tuesday Digital Health Hub** 1 - 3 pm at Highfield Centre, Keighley. A new way to connect to your doctors.

**Well-being Wednesdays 1 - 2.30pm at Cliffe Castle Park, Keighley.**

Every Wednesday (term time) for adults. Relaxing wellbeing, nature walks, arts & crafts, campfire cooking, Tai Chi. Places are limited so book your free place [www.getoutmore.co.uk/takepart/wellbeing](http://www.getoutmore.co.uk/takepart/wellbeing).

**Every Thursday is Games Cafe at KHL** 9.30 - 12 noon 13 Scott Street, Keighley.

**Every Thursday is Games Cafe at KHL** 9.30 - 12 noon 13 Scott Street, Keighley.

Free, just drop in.

**Keighley Mens' Forum** until the end of April, Thurs 10.00am until 11.30am at the Keighley Playhouse Annual sub is £5 with £2 a week to cover coffee, biscuits, a speaker and great company. For further details please contact Martin 07581 575749.

**Wellbeing Cafe at Central Hall Keighley** is held third Monday of each month from 1.30pm - 3.30pm Providing support to older people to help build friendships and combat feelings of isolation. Enjoy afternoon tea with entertainment support and advice.

**Sat 9th - Sun 24th April Easter Trail at Bolton Abbey.** Tickets must be pre-booked

**Sat 9th April 'Morton in Bloom' Spring Fair** 10am - 12noon East Morton Village Institute Refreshments and stalls

**23rd April Digital Art exhibition** by Joyce Simpson at Shipley Underground Market. (Free)

**Sun 10th April Aire Valley Railway Modeller's Club Open Day** 10 am - 4pm Free Entry Melbourne Mills, Dalton Lane Keighley

**Sun 10th April Laycock Village Hall tearoom** 1 - 4pm serving cake, coffee, tea.

**Sun 17th April Train rides for all the family.** Miniature trains running at Marley sports field approx. 13:30 until approx. 17:00.

Steam and electric trains providing trips for all ages.



To advertise call Karen or Liz on 01535 642227

## Come and share our love of walking



We are a small group of local people who like nothing better than to explore the lovely dales and moors around Yorkshire in sociable company.

Join us! We're sure you will feel much better for getting out in the fresh air.  
[www.ramblers.org.uk/keighley](http://www.ramblers.org.uk/keighley)

Cont. Great family afternoon out. Refreshments available. Details at [www.kdmes.org.uk/trains.htm](http://www.kdmes.org.uk/trains.htm)

**Fri 22nd - Sun 24th April Haworth Beer Festival** at The Old School Rooms, Haworth

**Sun 24th April Keighley Model Railway Club Open Day** Keighley Business Centre, South Street.

**Big Green Family Activity Day on 30th April** between 10am and 2pm at East Morton Institute. A wide range of fun and interesting family activities, talks and displays planned. These include wildlife treasure hunts on the rec, wildflower seed planting and making seed bombs as well as tips and tricks for planet friendly choices and greener households. Contact: [roger@mortonvillage.org.uk](mailto:roger@mortonvillage.org.uk)

## Computer Repairs

Local Home or Office PC/Tablet Repairs  
Friendly service with over 20 Years experience

- PCs •Laptops •Macs •Tablets •Mobiles
- TV/DVD/Audio •Broadband •Security
- Responsive Web Design & Hosting

Call Damian or visit [cyberwink.co.uk](http://cyberwink.co.uk)  
01535 654168 | 07946 596429

## Keighley Furniture Project

at Springfield Mills, Oakworth Road, Keighley, BD21 1SL

We accept donations of furniture and electrical items (also gas cookers) in good working order.

We pass items on to people on benefits, disabilities & pensions.

**Donate & we will collect.**

Visit our showroom.

01535 601999

Email [adminoffice@springfieldproject.co.uk](mailto:adminoffice@springfieldproject.co.uk)

[www.keighleyfurnitureproject.co.uk](http://www.keighleyfurnitureproject.co.uk)

Reg Charity No 1090090

## Ask Andrina

Office Solutions

Sage 50

VAT Returns

Xero

Bank Reconciliations

Bookkeeping

Credit Control

Payroll

Tel: 07876 345422 Silsden

Email: [andrina@askandrina.co.uk](mailto:andrina@askandrina.co.uk)

Web: [www.askandrina.co.uk](http://www.askandrina.co.uk)

Twitter: @askandrina



Accountax

- Self Assessment returns
- Partnership returns
- VAT services
- Monthly Bookkeeping
- CT600 Returns

For an affordable accountant in your area

Call Laura on 07582 669144 or email [laura.alderson@accountax-ky.co.uk](mailto:laura.alderson@accountax-ky.co.uk)



# TILES, TAPS & TUBS

## Tile & Bathroom Showroom *Supply | Design | Installation*


Bathroom Fixtures & Fittings. Tiles & Accessories.  
Free Quotations & Help With Designs.



Unit 12 Eastburn Mills (Nr Cross Hills)

**01535 652733**  
www.tilestapstubs.co.uk

Keep up with what's new on:   

**Need an Electrician?**  
**Jonathan Scott**  
**07732174201**

**JS Electrical**  
  
**Oakworth**

[js.electrical@outlook.com](mailto:js.electrical@outlook.com)

  
**Adele's  
Ironing  
& Cleaning Services**  
**£20 for 35 items**  
Telephone:  
**01535-643474**  
Mobile : 07837 452604  
**Free Collection & Delivery**

 **Golden Acorn Roofing** 

- Re-Roofs
- Roof Repairs
- Fascias & Soffits
- Guttering
- Leadwork
- Pointing
- Fibre Glass Roofing
- Velux

[goldenacornroofing@gmail.com](mailto:goldenacornroofing@gmail.com)  
[www.goldenacornroofing.co.uk](http://www.goldenacornroofing.co.uk)  
Call Chris 07732022482.

  
**CALDERBANK HEATING**



Friendly, ethical and award winning Heating Engineer providing:

- Boiler installations & servicing for all oil, gas and LPG boilers
- System flushes

  
Over 70 5-star reviews (Trust Pilot & Google)

Free online help videos at [www.calderbankheating.co.uk](http://www.calderbankheating.co.uk)  
Tel: **01535 819820**  
[calderbank.heating@gmail.com](mailto:calderbank.heating@gmail.com)

Take control of your heating system, reduce your fuel usage, and tackle climbing prices

  
**AIREDALE PROPERTY MAINTENANCE**

Feel free to call Mark on **07956 615940** any property maintenance needs you may have, no matter how big or small!

**ALL ASPECTS OF PROPERTY MAINTENANCE:**

- Purpose built garden sheds, structures, man caves, etc.
- Plumbing, •Electrics, •Joinery
- Decking, •Fencing
- Flat pack furniture erectors



**MB ROOFING**

Local & Reliable, Over 10 Years Experience  
Full Roof Replacements, Small Roof Repairs, Joinery, Soffits, Guttering, Sheds, Fencing  
Welding Fabrication Services  
Warranty Available (Job Dependent)

Call Matthew Now & Get A Fast Free Quote  
Tel: 01535 608986 Mob: 07808 158588  
[mbroofing625@gmail.com](mailto:mbroofing625@gmail.com)

  
**Broomhill Roofing**

Firestone Rubber Membrane Flat Roofing Systems  
20 year Guarantee

New Slate & Tiled Roofs, Roof Repairs, Fascia's, Guttering & Velux Windows

Telephone to arrange a free no obligation survey & quote  
Tel: **01535 628821** [www.broomhillroofing.com](http://www.broomhillroofing.com)

## BEHIND THE SCENES AT THE MUSEUM



### Jocelyn Horner, sculptor of The Brontë Sisters

One very recognisable sight at the Brontë Parsonage Museum is the bronze statue of the three sisters which stands in the flowerbed in the courtyard at the rear of the Parsonage. For many visitors, their first glimpse of it is when they pause halfway up the Parsonage stairs. Looking out of the window, they point at the statue and more often than not, they ask if it is possible to access the courtyard to take a photo and a closer look.

Jocelyn Horner was born in 1902 in Halifax, West Yorkshire. Her father was one of two sons of Charles Horner, a Halifax jeweller. In 1920, Jocelyn entered Leeds School of Art where two of her fellow pupils were Barbara Hepworth and Henry Moore. She would remain friends with the latter all her life.

During World War II, Jocelyn undertook

Red Cross work and then trained as a welfare worker for the blind. She became extremely passionate about this work and created a sculpture entitled Head of a Blind Man, which is held at the London headquarters of the Royal National Institute of Blind People. Jocelyn was proactive in other welfare work including with the Halifax branch of the Royal Society for the Prevention of Cruelty to Animals. She was also a member of Halifax Parish Church (Halifax Minster), and worked as a teacher where she passed on her knowledge and encouragement to many students.

The commission from the Brontë Society came in 1950. The sculpture was originally intended to be placed in Haworth Church close to the Brontë family vault, but the Church Council did not approve the statue being placed in that particular location.

The Brontë Society was thrilled with the completed work and while a location for it was being decided, the sculpture was kept at Leeds City Art Gallery where, on Tuesday 24 July 1951, it was unveiled in the presence of 120 members of the Brontë Society.

The Brontë Sisters statue earned Jocelyn the Leeds Gold Medal under the annual award for work by artists born of Yorkshire parents. Jocelyn was a Yorkshire woman through and through and she was proud of it. Apart from a time spent residing with her mother in Oxfordshire, she lived most of her life in Halifax. Just like the sisters she so admired, she strived to make a place for herself in a profession which, at the time, would have been very male-dominated. Jocelyn Horner died on 13 January 1973; there is a blue plaque on the Halifax house where she lived for the majority of her life.

~ Kate Walker Visitor Experience Assistant, Brontë Parsonage Museum

## Spring at the Brontë Parsonage Museum

Events, workshops and family fun!

Please visit [www.bronte.org.uk/whats-on](http://www.bronte.org.uk/whats-on) or call into the Museum for details

Brontë Parsonage  
MUSEUM

Haworth, Keighley, West Yorkshire BD22 8DR  
01535 642323 [www.bronte.org.uk](http://www.bronte.org.uk)  
Reg Charity: 529952 Reg Company: 73855



### Bogthorn Area



We are looking for committed hardy individuals (no matter the weather!) willing to make monthly deliveries in the Worth Valley. We do our best to find a round close to your home.

- ✓ Earn extra money
- ✓ Get fit
- ✓ Help the community
- ✓ From age 14+

To apply contact Liz:  
[Liz@worthvalleymag.co.uk](mailto:Liz@worthvalleymag.co.uk)  
include your name, address, & contact details.

### Police Approved LOCKSMITHS <sup>Ref 035</sup>

- Local 24 Hour Locksmith
- No Call Out charge • 1 Hour Response
- Insurance Approved • All work Guaranteed



- UPVC Specialist • Emergency Door Opening
- Burglary Repairs • All Locks supplied & fitted
- OAP discount • Family Run Business

Call Craig on: 01535 628313 & 07868 786966  
[www.inhousecurities.co.uk](http://www.inhousecurities.co.uk)

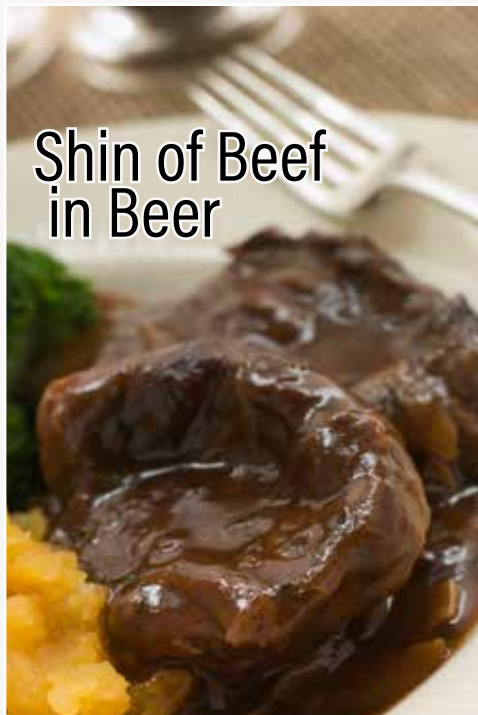
Don't lose those precious moments!

### VHS to DVD Conversion



Photo slideshows  
Audio tape to CD/MP3  
DVD to MP4

Tel: 07944 023 597  
email: [jlorrimer@icloud.com](mailto:jlorrimer@icloud.com)



## Shin of Beef in Beer

1kg beef shin in thick slices or large chunks  
 1 rounded tablespoon of plain flour  
 2 teaspoons of wholegrain mustard  
 2 tablespoons of brown sugar  
 350 ml of dark ale (Timothy Taylors Landlord Dark is ideal)  
 350ml of beef stock  
 2 bay leaves  
 small bunch of fresh thyme  
 a good pinch of sea salt  
 several grinds of black pepper

### Method

Pre-heat your oven to 130C, gas mark 2. You will need a good, large ovenproof stove top pot or casserole dish with a well-fitting lid. Melt your lard or dripping in your pot on a high heat. Once hot, add your chopped bacon and fry until just starting to crisp. Turn the heat to low and add your chopped onions, stirring occasionally until they are soft, about 5-10 minutes.

Now chuck your beef shin into the pot, stir then add your flour, mustard, sugar and allspice. Stir to mix thoroughly then add your beer and stock.

Stir again, bring to a simmer and lob in your thyme and bay leaves. Season to taste with salt and ground black pepper.

Pop on your lid transfer to the oven and cook for 3 hours.

If cooking the day before, once cooked, allow to cool before chilling.

This can be reheated either on the stove top by bring to a simmer and cooking for 10 minutes at a very gentle simmer, stirring occasionally, or in the oven at 130C for an hour. or so.

Serve with hunks of crusty bread to soak up the gravy, or mashed potato and swede, and boiled, buttered savoy or spring cabbage. (feeds 4)

~Martin Lingard

Shin of beef is one of the cheapest cuts of beef so this is a good recipe for families on a tight budget. If cooked slowly at a low temperature, beef shin is also one of the tastiest and most succulent cuts of beef. I like to get my beef shin from **Marsh Top Farm Shop** between Oxenhope and Haworth. The shin from their Dexter cattle really is the best I've ever had. In my opinion, beef shin benefits from being cooked in big chunks or even in thick slices rather than diced so I always ask for it this way from my butcher. This dish is improved by being cooked the day before then reheated.

### Ingredients

50g lard or dripping  
 2 medium onions, chopped  
 1 teaspoon ground allspice

**Phillipe's**  
 Curtains, Upholstery, Blinds,  
 Blind Repairs, Wallpapers,  
 New Cushion Interiors  
 Home visits available or  
 book an appointment to  
 visit our showroom

100% of fabrics to choose from!

Crosshills Tel: 0759 181 5628  
 info@phillipes.co.uk • www.phillipes.co.uk

**Office Furniture Outlet**  
 Eagle Mill, Dalton Lane  
 Keighley, BD214HT

**Andrea Jannetta**  
 Sales & Marketing Manager  
 01535 681111

andrea@officefurnitureoutlet.co.uk  
 www.officefurnitureoutlet.co.uk

### Sudoku solutions

1	8	6	4	9	5	2	7	3
7	4	9	3	2	1	6	5	8
2	3	5	6	7	8	1	4	9
4	1	2	8	3	7	5	9	6
8	9	3	5	6	2	7	1	4
5	6	7	9	1	4	8	3	2
3	5	1	2	4	6	9	8	7
6	7	4	1	8	9	3	2	5
9	2	8	7	5	3	4	6	1

1	2	3	4	5	8	7	9	6
6	4	9	7	1	3	5	2	8
7	8	5	9	6	2	4	3	1
2	6	8	1	9	4	3	5	7
4	5	7	3	8	6	9	1	2
9	3	1	5	2	7	6	8	4
5	7	2	8	4	9	1	6	3
3	1	6	2	7	5	8	4	9
8	9	4	6	3	1	2	7	5

1	8	7	9	6	5	2	3	4
6	3	4	7	8	2	1	9	5
9	5	2	1	3	4	6	7	8
2	4	3	8	9	6	5	1	7
5	7	6	4	2	1	9	8	3
8	9	1	3	5	7	4	2	6
7	1	5	2	4	8	3	6	9
3	6	8	5	1	9	7	4	2
4	2	9	6	7	3	8	5	1

1	2	4	8	5	9	6	3	7
5	8	6	7	3	4	9	1	2
3	7	9	6	1	2	4	8	5
4	9	7	1	2	8	3	5	6
2	5	1	3	9	6	8	7	4
8	6	3	4	7	5	1	2	9
7	3	5	9	4	1	2	6	8
6	4	2	5	8	3	7	9	1
9	1	8	2	6	7	5	4	3

**ANDREW M ELLERSHAW**  
 Your local Independent Funeral Director

Independent & family owned  
 Private Chapel of Rest  
 Serving all areas

Supporting the bereaved for 30 years

- Simple, traditional & modern Funerals
- Pre-paid Funeral Plans available through Golden Charter
- Memorial Masonry services

Call 01535 648542 or 01274 551555  
 We are available anytime day or night

For more information visit our website at  
 www.aefuneralservices.co.uk  
 email: andrew@aefuneralservices.co.uk

Bingley Chapel of Rest, Church Street, Bingley BD16 2PU

**Andy Beattie**  
**PAINTER & DECORATOR**  
 Quality Interior & Exterior work  
 Competitive Rates  
 Prompt & Efficient Service  
**m: 07817 132784**

**R.P. DECORATING**  
 All Aspects of Decorating  
 Interior & Exterior  
 Domestic & Commercial  
 City & Guilds Qualified  
 Over 30 Years Experience

FOR FREE PROFESSIONAL ADVICE AND QUOTATIONS CALL

T: 01535 642 864 M: 07989 560 206  
 MEMBER OF THE PAINTING & DECORATING ASSN.

# Welcome to Rail Story at Ingrow Station on the Keighley & Worth Valley Railway



**Rail Story at Ingrow Station** is a unique collaboration between the Keighley & Worth Valley Railway (KWVR), the Vintage Carriages Trust (VCT) and the Bahamas Locomotive Society (BLS). Rail Story sits alongside the long established heritage railway and through its two accredited and award-winning museums tells the story of how rail travel used to be. There are four elements to the site which are:

**The Railway Station** open on KWVR operating days. Please visit [www.kwvr.co.uk](http://www.kwvr.co.uk) for more details.

**The Learning Coach** situated next to the main platform of the station and in use as an educational facility for schools and other groups.

**The Engine Shed** which is the Museum and Workshop of the BLS containing a small shop and many interesting displays through aspects of railway history, majoring on steam engines but also including trainspotting, train sets and railway photography..

**The Carriage Works** which is the Museum and Workshop of the VCT which also has a shop selling donated railway books, magazines, dvd's and other railway items and of course displays vintage railway carriages dating back to 1876 into which visitors are able to enter. Many of these carriages have appeared in TV series and famous feature films including The Railway Children in 1970.

**The Engine Shed and Carriage Works Museums are open on most days of the year from 11.00am to 4.00pm even when the KWVR trains are not running.** There is a small admission charge for the Museums. Please come and pay us a visit and take a peek into the past and imagine what it was like to travel in the days when the world was changed by the steam engine. Visit our website [www.railstory.co.uk](http://www.railstory.co.uk) for further details

# BUSINESS DIRECTORY Local Services

## Accountancy/ Business Services

Accountax p21  
Ask Andrina p21  
Truhar Accountancy p2

## Aerials/Audio/TV

Digi Man p9

## Attractions/Community/ Courses/Events

Bolton Abbey p25  
Bronte Parsonage p24/25  
Haworth Beer Festival p  
Keighley Furniture Project p21  
Keighley Ramblers p21  
Keighley Transport Festival p  
16/17

It's Worth Talking About p9  
KWVR p18/19

Rail Story at Ingrow p28/29  
Robbie Moore p3

Treacle p8

Upstairs at Pennybank p15

## Building Services/Repairs

Airedale Property Maintenance  
p23

Broomhill Roofing p23

MB Roofing p23

Golden Acorn Roofing p23

Yorkshire Loft Ladders p10

## Care/Cleaning /

### Domestic

Adele's Ironing p23

## College/Schools

Keighley College p13

## Computer/Web Related

Computer Repairs p21  
DVD Conversion p23

## Electricians

JS Electrical p23

## Fencing

Worth Valley Fencing p2

## Fire & Security

Keybury p3

## Fuel /Heating

Anchor Logs p11  
Calderbank Heating p23  
Nicholson Heating p11

## Funeral

Andrew M Ellershaw p27

## Garage Doors

Garolla p14

## Gardening/Trees

JE Homes & Garden p19  
SAS Landscape & Gardening p19  
Worth Valley Trees p19

## Holidays

Steels p15

## Kitchens

Queensbury Kitchens p32

## Locksmiths

In House Securities p25

## Loft Conversions

Yorkshire Loft Ladders p31

## Painting & Decorating

Andy Beattie p27  
RP Decorating p27

## Plumbing

AR Carling p11  
Calderdale Heating p23  
DSM p11  
Nicholson Heating p11

## Restaurants

Ashmount House p4&5

## Retail

DSM p11  
Marsh Top Farm p17  
Office Furniture Outlet p27  
Phillipe's p27  
Queensbury Kitchens, Bedrooms  
& Bathrooms p32

## Roofing

Broomhill Roofing p23  
Golden Acorn p23  
MB Roofing p23

## Wills

In Home Wills p32

## Windows

Bingley Windows p3

Here's a great way  
to make more  
storage space...

Install a loft ladder  
and make more use  
of your loft!



Loft ladder, Light & Switch plus 50 sqft of  
flooring from as little as £277 +VAT which  
includes FREE fitting in less than a day.

Our customers choose us to fit their loft ladders,  
because we offer:

- A FREE home visit
- Fully guaranteed
- A FREE written quotation
- A large selection of ladders

Call now! Freephone 0800 612 8359  
[www.yorkshireloftladders.co.uk](http://www.yorkshireloftladders.co.uk)

QUALITY INTEGRITY  
VALUE  
YORKSHIRE  
LOFT LADDERS

## Yorkshire Loft Ladders, Quality You Can Trust

These days most homeowners suffer from a lack of storage space. So many precious items that need to be kept - but where to store it all? That's where Yorkshire Loft Ladders come in. The company, based locally, offers homeowners the opportunity to maximise their storage space with a loft ladder, 50 sq ft of boarding and a light all fully fitted in less than a day from just £277 + VAT. But it's not just the affordability of the package the company offers that makes Yorkshire Loft Ladders stand out as manager Mark Hodson explains: 'Our watchwords are Quality, Integrity and Value. Quality in the materials that we use for all our installations and the fact that all our loft packages are fitted by time served tradesman so our customers are assured of the best job. Integrity in that we will turn up at the time we say and make sure the house is spotless when we leave, and Value in that we offer our services at a price people can afford. Our business relies on referrals and we get a huge

amount of our calls from people who have been referred to us by our existing customers - that simply wouldn't happen if we didn't adhere to our overniding principles.

At the end of the day the old adage that happy customers lead to more happy customers is true and we work hard to make that happen for every installation we carry out!

So, if you want to make use of your loft space, however big or small, call Warren on 0800 612 8359 and

he'll be happy to pop round and give you a no obligation quote so you too can make use of your loft.



Would you like to advertise your products or  
services in this magazine? Contact Jo or Liz:  
01535 642227 [mail@worthvalleymag.co.uk](mailto:mail@worthvalleymag.co.uk)

 Like. Follow. Share.





**COVID  
COMPLIANT**

# Tailored to your needs

In the comfort of your home

When you choose In Home Wills for your last will and testament, you can be assured that you are in safe hands. We are a leading will and estate planning company in West Yorkshire

and offer reliable will writing services at great prices. From assistance understanding the laws surrounding inheritance tax to drafting a last will and testament, count on us to help.

**Comprehensive range of services include:  
Will writing • Power of attorney • Trusts  
Friendly & hassle-free help**



Freephone **0800 999 1358**  
Email [info@inhomewills.co.uk](mailto:info@inhomewills.co.uk)  
[www.inhomewills.co.uk](http://www.inhomewills.co.uk)



In home wills



Complimentary  
design  
consultation

## QUALITY KITCHENS, BEDROOMS AND BATHROOMS

We will beat any  
genuine quote



Fully fitted or  
supply only

**Queensbury Kitchens**  
Trading since 1992

18A Black Dyke Mills, Brighouse Rd, Queensbury, BD13 1QA • 01274 882349 • [info@queensburykitchens.com](mailto:info@queensburykitchens.com)

To advertise call Karen or Liz on 01535 642227